

Fast-Track your Career with a Childcare Traineeship



Everything you Need to know!



Contents

So you're interested in a career in Early Childhood Education?	3
Who is involved in your traineeship journey?	4
Different types of traineeships	5
How much can you earn?	6
Getting to know the qualifications	7
Why ToBeMe Early Learning?	8
A little more about ToBeMe	9
Three easy steps to Fast-track your career with ToBeMe	10
Apply Now!	11



Why Choose a Childcare Traineeship?

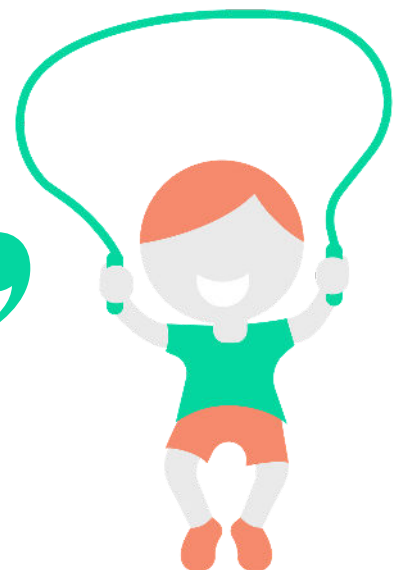
Here are just a few benefits of completing a traineeship in Early Childhood Education:

- ☛ Trainees earn while they learn and gain a nationally recognised qualification
- ☛ Trainees gain practical skills and work experience whilst studying
- ☛ Graduates increase their chances at securing a permanent position
- ☛ You will be provided with on the job supervision and mentoring by experienced educators to help you along your career journey
- ☛ NSW government has capped course fees at \$1,000 for Certificate III and \$1,500 for Diploma courses
- ☛ **If you are undertaking your Certificate III traineeship at ToBeMe, we will reimburse you upon successful completion of the course**

“It's been a wonderful experience working with ToBeMe whilst completing my Certificate III. I have made strong connections with families and children and have gained valuable knowledge and skills from the educators.”

Monica S, Certificate III Trainee with ToBeMe

**ToBeMe
will pay
for your
Cert III**





Who is Involved in your Traineeship Journey?



Employer

Employs trainees and provides appropriate support, training and supervision on the job for their trainees to gain the skills and knowledge to complete the requirements of the vocation.



You- the Trainee

Trainees combine work with an employer to learn all aspects of a vocation, and study to achieve a nationally recognised qualification.



Registered Training Organisation (RTO)

Develops a training plan and assesses achievement of skills and knowledge and issue the qualification upon successful completion of training.



ToBeMe
partners
with
TAFE
NSW

Natural Study Progression

NO ATAR OR HSC REQUIRED



TRAINEE
START

EARN
WHILE YOU
LEARN



Different Types of Traineeships



1. School Based Traineeships

Still at school, but keen to get started in the workplace? Check if your school has partnered with an Early Learning Centre and offer a Certificate III in childcare as an HSC subject or ask ToBeMe to contact your careers' adviser for you. If you are a Year 10, 11, or 12 student, a school based traineeship has even more advantages for you. The requirements of this course include 120 hours paid of structured workplace learning. The benefits include:

- Counts towards your HSC
- Paid work while you're studying
- Opportunity to secure a part time role
- A head-start on your career
- Gain practical skills and work experience while studying
- Invaluable experience

**Your
Certificate
III counts
towards
your HSC**

2. Workplace Traineeship/ Mature Age

Workplace traineeships/ mature aged traineeships apply to individuals who are no longer in high school. It also applies to those who are looking to re-enter the work force or change careers. The benefits include:

- Secure a permanent position
- Gain practical skills and work experience while you are studying
- Provided with on the job supervision and mentorship
- Your workplace partners with a RTO to provide structured learning
- Take your first step into an exciting career



“ I'm a kinesthetic learner and I always knew University wasn't for me. Completing a traineeship allowed me to gain hands on experience that helped to reassure my interest in Early Childhood Education. ”

Larissa G- ToBeMe Educator




Cert III Trainee Wages 2019

1. School Based Traineeships

Year	Wage
Year 11 or younger	\$8.50/ hr
Year 12	\$9.38/ hr

2. Workplace Traineeship/ Mature Age

 Highest Level of Schooling Completed	Highest Level of Schooling Completed		
	Year 10 per hour	Year 11 per hour	Year 12 per hour
School Leaver	\$8.50 (\$323.10/ wk)	\$9.38 (\$355.80/ wk)	\$11.16 (\$423.90/ wk)
Plus 1 yr out of school	\$9.38 (\$355.80/ wk)	\$11.16 (\$423.90/ wk)	\$12.99 (\$493.30/ wk)
Plus 2 yrs out of school	\$11.16 (\$423.90/ wk)	\$12.99 (\$493.30/ wk)	\$15.10 (\$574.10/ wk)
Plus 3 yrs out of school	\$12.99 (\$493.30/ wk)	\$15.10 (\$574.10/ wk)	\$17.29 (\$657.30/ wk)
Plus 4 yrs out of school	\$15.10 (\$574.10/ wk)	\$17.29 (\$657.30/ wk)	\$17.29 (\$657.30/ wk)
Plus 5 or more yrs out of school	\$17.29 (\$657.30/ wk)	\$17.29 (\$657.30/ wk)	\$17.29 (\$657.30/ wk)

Amounts are correct at time of printing. Figures were gathered at the Fair Work Ombudsman P.A.C.T Pay Calculator at <https://calculate.fairwork.gov.au/findyouraward>

Wages for Cert III educators start from \$840 /wk

Wages for Diploma educators start at \$942 /wk

Industry standard for Early Childhood Educators ranges from \$52,000 - \$80,000 /yr



Getting to know the Qualifications

Work Place Training vs. the Classroom

Qualification	Obtaining Through Tertiary Qualification	Cost of Qualification through Traineeship	Working with ToBeMe
Certificate III in Early Childhood Education and Care (CHC30113)	\$3,000 - \$6,500	\$1,000 + Hourly Wage	\$0 + Hourly Wage
Diploma of Early Childhood Education and Care (CHC50113)	\$4,630 - \$5,470	\$1,500 + Hourly Wage	\$1,500 + Hourly Wage

Defining Qualifications

Certificate III in Early Childhood Education and Care (CHC30113)

Entry level, 12 month course that prepares you for a range of Early Childhood Education roles. Trainees will learn to support the implementation of an approved learning framework to ensure childrens' well being, learning and development. No prior qualifications required.

Smart and Skilled Certificate III in Early Childhood Education and Care (CHC30113)

Smart and Skilled refers to individuals who have already attained a diploma or degree. This only applies to individuals who apply for their Smart and Skilled Cert III less than 7 years after receiving their diploma/ degree. Successful applicants can pay as little as \$400 for Cert III. You can check your eligibility at <https://smartandskilled.nsw.gov.au/> or call 131 601 for further information or advice. Diploma or degree in any field required.

Diploma of Early Childhood Education and Care (CHC50113)

Nationally recognised qualification which prepares you to work in a range of early childhood settings with children up to six years of age. Early Childhood Educator (Supervisor roles) in long day care, child care Centres and occasional care.

Why ToBeMe Early Learning?



If you are enthusiastic, motivated and committed to quality education, there is great career development potential for you at ToBeMe. We can help you work your way up into a teaching position or pursue further study and gain the qualification needed to work in a leadership role. What can we offer you?



- TAFE Partnership
- Employee advantages
- Opportunity to implement our ToBeMe Early Learning Curriculum
- Work with industry professionals
- We pay for the entire cost of your Cert III course
- Mentoring and career guidance

“Teaching is my passion. Not only do I love teaching the little ones, but my passion extends beyond the classroom by mentoring and teaching educators.”

Claudine Monaghan, Centre Director at ToBeMe Five Dock

Employee Advantages

We offer our educators a range of benefits above and beyond a great culture...

- We believe in celebrating our educators' interests with everything from music and dance, to language and we work to incorporate your passions into our curriculum
- We encourage educators to be role-models for meal times with our children, modeling grace and courtesy as well as healthy eating habits. This means enjoying meals prepared by our onsite chef. We also have a fully equipped staff room should you choose to bring your own lunch
- We offer state-of-the-art campuses with outdoor gardens, a LEGO and Music Room, and much more to ensure our educators have the best teaching resources available
- We provide comprehensive induction, career progression, as well as support and mentoring programs to ensure our educators are happy and well trained.

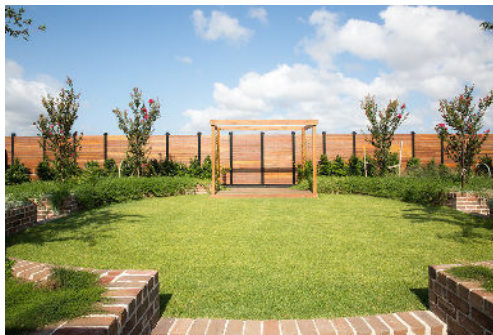
A little more about ToBeMe Early Learning

The Best of the Best

We've taken the best elements of the most successful teaching theories, including Reggio Emilia, Montessori, and THRASS Phonetics and overlaid them with proven behavioural and child psychology principles to create our ToBeMe Early Learning Curriculum™.



Better by Design



The environment is a child's third teacher. Research shows that physical learning environments have a huge role to play in affecting behaviours. With this in mind, our facilities have been designed by well-respected and award-winning architect Sarah Scott of Scott and Ryland Architects.

Time to Teach

Our educators have more time to be with the children, mentor them and develop personalised learning plans agreed to by the whole family. When your child enrolls at ToBeMe, we draw on your knowledge and understanding of your child to develop their individual learning plan with a goal to inspire, excite and fuel their imagination.



Quality Relationships

At ToBeMe, we are more than just a childcare centre, we are a community that cares about giving your family more quality time together both on-campus and at home. As soon as you step into one of our two campuses, the feeling of being part of a close-knit community is palpable.





ToBeMe Early Learning 3 Step Traineeship Program

A traineeship with ToBeMe is as easy as 1, 2, 3!

1 Check Eligibility

Are you eligible? You can check anytime at <https://www.australianapprenticeships.gov.au/eligibility>



If you are over the age of 18, you will need to complete a Working with Children Check. This is an online application through the RMS which will then require you to visit any Service NSW Centre to collect.

<https://www.kidsguardian.nsw.gov.au/child-safe-organisations/working-with-children-check>

2 Contact Us

Let us know if you are interested in starting your career journey with us! Register your interest by completing the form on our website at <http://tobeme.com.au/careers/>. We cater to children between the ages of 0 to 6 and are an industry approved Centre and we will contact Apprenticeships Australia to organise your sign-up.

If you have any questions during this process, feel free to give us a call at (02) 9744 0066 or e-mail us at careers@tobeme.com.au.

3 Enrol

Upon successful completion of the ToBeMe application process, we will arrange your enrolment process with TAFE NSW- just sit back and relax, we've got this. A representative from TAFE NSW will be in contact with you to set up a fee schedule and your first modules. They will provide customised training to support the skills you are learning in the workplace. If you are undertaking your traineeship through ToBeMe Early Learning, a portion of your course fees will be reimbursed after 3 months of studying, and the final balance will be reimbursed upon successful completion of the course.

In partnership with TAFE NSW you will be provided with a nationally recognised qualification required to work in the Early Childhood Education Industry.

We Invest in our Educators

We offer a personalised mentoring plan to help you...

Set Goals- What does your career journey look like and how can we help you to achieve it?

Get Inspired- We explore how we can incorporate your interests and talents into your teaching curriculum to make for a personalised learning experience.

Get Results- Working together to achieve your plan.

Become an Industry Leader- We help you to achieve everything you aspire to be.



For any inquiries or more information on the application process contact us on (02) 9744 0066. Click the link below to apply now!

[Apply Now!](#)

Burwood

(02) 9744 0066

Level 3, 11-15 Deane St.

Burwood NSW 2134

jenny@tobeme.com.au

Five Dock

(02) 9744 0066

25-27 Spencer St,

Five Dock NSW 2046

claudine@tobeme.com.au



tobeme.com.au

